



Buster Quilt designed by: **Eye Candy Quilts** • Quilt Size: **54" x 66"**

Skill Level: **Advanced Beginner**

Buster



Featuring Andover Fabrics new Collection: Dottir by Eye Candy Quilts
Quilt designed by Eye Candy Quilts

Quilt finished 54" x 66"

Cutting Directions

Note: Read assembly directions before cutting patches. Borders are cut to exact length required plus 1/4" seam allowance. WOF designates the width of fabric from selvedge to selvedge (approximately 42" wide).

- Fabric A** Cut (8) 2 1/2" x WOF strips. Sub-cut the strips into (16) 2 1/2" x 14 1/2" strips.
- Fabric B** Cut (9) 2 1/2" x WOF strips. Sub-cut the strips into (17) 2 1/2" x 14 1/2" strips.
Cut (6) 2 1/2" x WOF strips for the binding.
- Fabric C** From the (22) fabrics, cut a total of (99) 2 1/2" x 14 1/2" WOF strips.
- Backing** Cut (2) 62" x WOF strips. Sew the strips together and trim to make (1) 62" x 74" backing.

Fabric Requirements

		Yardage	Fabric
Fabric A	blocks	2/3 yard	238-ML1
Fabric B	blocks, binding	1 1/4 yards	238-MK
Fabric C	blocks	1/4 yard ea.	238-MB
			238-MB1
			238-MC
			238-ME
			238-MG
			238-MG1
			238-ML
			238-MLP
			238-MN
			238-MO
			238-MO1
			238-MO2
			238-MP
			238-MR
			238-MR1
			238-MT
			238-MT1
			238-MV
			238-MY
			238-MY1
			238-MY2
			238-MY3
Backing		3 1/2 yards	238-MLP

Buster

Making the Quilt

Quilt Top Assembly

(Refer to the Quilt Layout when assembling the quilt top.)

1. Sew together (33) assorted 2 1/2" x 14 1/2" Fabric C strips lengthwise to make Column One. Repeat to make Column Two and Column Four.
2. Sew together (17) 2 1/2" x 14 1/2" Fabric B strips and (16) 2 1/2" x 14 1/2" Fabric A strips, lengthwise and alternating them from top to bottom, to make Column Three.
3. Sew together the (4) Columns from Steps 1-2, lengthwise and in numerical order from left to right, to make the quilt top.

Finishing the Quilt

4. Layer and quilt as desired.
5. Sew the (6) Fabric B binding strips together, end to end with a 45-degree seams, to make the binding. Fold this long strip in half lengthwise with wrong sides together and press.
6. Bind as desired.



Dottir

EYE CANDY QUILTS



238-MB 1/4 yd



238-MB1 1/4 yd



238-MC 1/4 yd



238-ME 1/4 yd



238-MG 1/4 yd



238-MG1 1/4 yd



238-MK 1 1/4 yds
(includes binding)



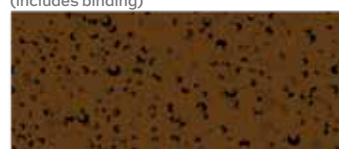
238-ML 1/4 yd



238-ML1 2/3 yd



238-MLP 3 3/4 yds
(includes backing)



238-MN 1/4 yd



238-MO 1/4 yd



238-MO1 1/4 yd



238-MO2 1/4 yd



238-MP 1/4 yd



238-MR 1/4 yd



238-MR1 1/4 yd



238-MT 1/4 yd



238-MT1 1/4 yd



238-MV 1/4 yd



238-MY 1/4 yd



238-MY1 1/4 yd



238-MY2 1/4 yd



238-MY3 1/4 yd

Fabrics shown are 25% of actual size.

About Our Fabrics

A recognized leader in the quilting industry, Andover Fabrics features designs by a wide variety of talented artists and licenses, including Downton Abbey and Eric Carle's The Very Hungry Caterpillar. Catering to the tastes of creative and dedicated quilters, Andover has a style for everyone — authentic reproductions, romantic florals, modern and more.



Free Pattern Download Available

1384 Broadway New York, NY 10018
Tel. (800) 223-5678 • andoverfabrics.com